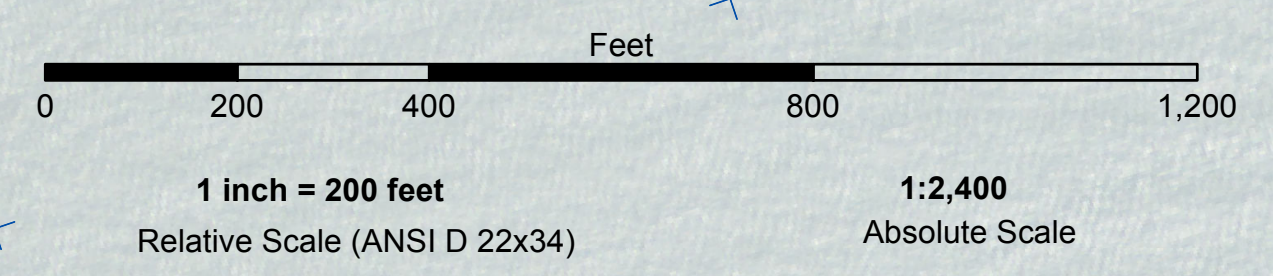


**PRELIMINARY ISSUE**  
THIS PLAN ISSUED FOR  
ADVANCE INFORMATION ONLY



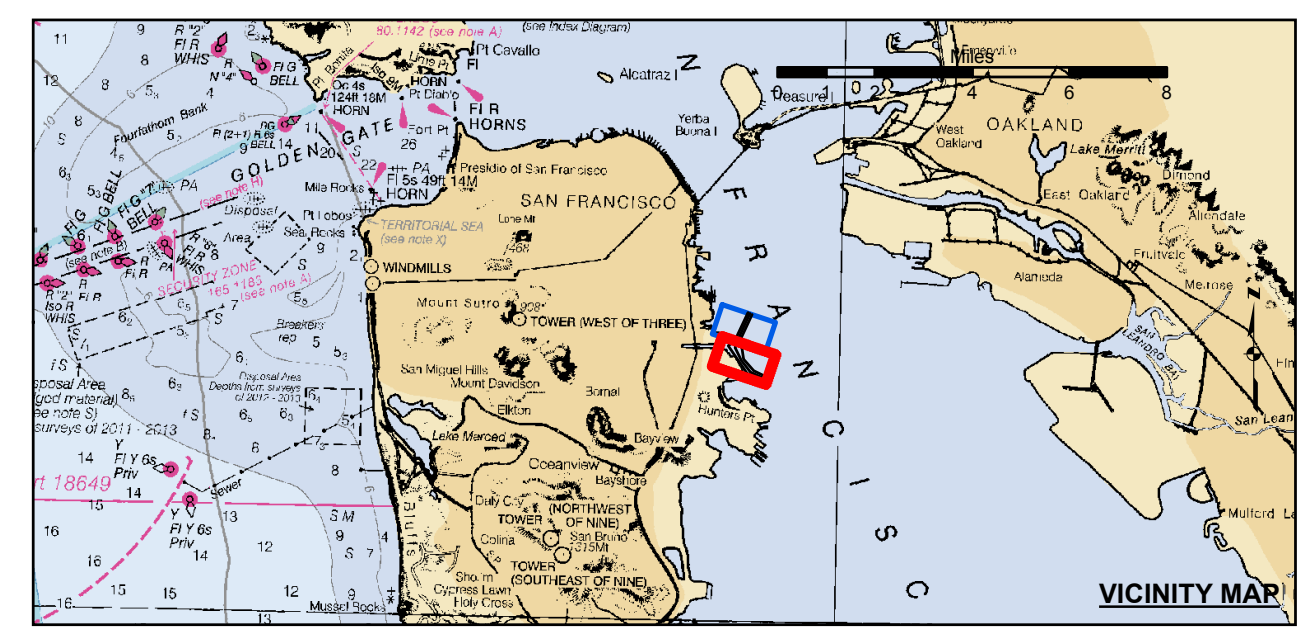
**US Army Corps of Engineers**  
San Francisco District  
1455 Market Street  
San Francisco, CA 94103

**DISCLAIMER**  
The United States Government furnishes the data represented in this plan for informational purposes only. It is not intended for navigation. The user is responsible for the results of any application of the data for other than its intended purpose. The user is responsible for the results of any application of the data for other than its intended purpose. The user is responsible for the results of any application of the data for other than its intended purpose. The user is responsible for the results of any application of the data for other than its intended purpose.

|              |              |
|--------------|--------------|
| Chart Date:  | Sep 26, 2014 |
| Designed by: | PDT          |
| Plotted by:  | PDT          |
| Checked by:  | PDT          |
| Drawn by:    | PDT          |

CALIFORNIA  
**ISLAIS CREEK**  
CONDITION SURVEY  
25 SEPTEMBER 2014

**Sheet Reference Number**  
2 of 2



- |                            |                    |                 |
|----------------------------|--------------------|-----------------|
| Federal Navigation Channel | Beacon, General    | <b>Contours</b> |
| Shoaling Area              | Obstruction Point  | -40             |
| Placement Area             | Navigation Buoy    | -39             |
| Anchorage Area             | Navigation Buoy    | -38             |
| Wreck Area                 | Shoalest Sounding* | -37             |
| Submerged Wreck            |                    | -36             |
| Angle Point                |                    |                 |

**NOTES:**  
HORIZONTAL COORDINATE SYSTEM:  
NORTH AMERICAN DATUM OF 1983 (NAD83), PROJECTED TO THE STATE PLANE COORDINATE SYSTEM (SPCS), CALIFORNIA ZONE III. DISTANCE UNITS IN U.S. SURVEY FEET.  
VERTICAL DATUM:  
SOUNDINGS ARE SHOWN IN FEET AND INDICATE DEPTHS BELOW MEAN LOWER LOW WATER.  
THE INFORMATION DEPICTED ON THIS MAP REPRESENTS THE RESULTS OF A SURVEY CONDUCTED ON THE DATE INDICATED AND CAN ONLY BE CONSIDERED TO REPRESENT THE GENERAL CONDITION EXISTING AT THAT TIME.  
PLANE GRID, BEARING AND COORDINATES ARE BASED ON THE STATE OF CALIFORNIA COORDINATE SYSTEM, LAMBERT CONFORMAL PROJECTION, ZONE III NAD 83, CALIFORNIA, AS DESCRIBED IN SPECIAL PUBLICATION NO. 253, PUBLISHED BY NATIONAL OCEAN SURVEY.  
\*SHOALEST SOUNDING PER QUARTER PER REACH

DRAWING NOT TO BE USED FOR NAVIGATION. ONLY CHANNEL CONDITION AT DATE OF SURVEY.  
THE LOCATION OF ALL NAVIGATION AIDS ARE BASED ON INFORMATION PROVIDED BY THE U.S. COAST GUARD. BUOY LOCATIONS REPRESENT THE POSITION OF THE SINKER ONLY.  
SURVEYED BY THE CORPS OF ENGINEERS.  
SOUNDINGS WERE TAKEN BY FATHOMETER AND ARE SHOWN TO THE NEAREST TENTH OF A FOOT. SOUNDINGS ARE BASED ON THE DATUM OF MEAN LOWER LOW WATER AT THE LOCALITY. BASE MAPS ARE USDA NAIP 2010.  
THE PROJECT DEPTH IS 40 FEET AT M.L.L.W. SOUNDINGS ARE BASED ON THE TIDE GAUGE LOCATED AT THE HYDE STREET PIER, SAN FRANCISCO, CALIFORNIA.  
CONTROL:  
HORIZONTAL: DGPS  
TIDES:  
NOAA 841 4358  
"S 1941" (PID: HT0615) 15.79' MLLW